

Fundamental bounds on the precision of iSCAT, COBRI and dark-field microscopy for 3D localization and mass photometry

Jonathan Dong¹ , Dante Maestre^{2,3}, Clara Conrad-Billroth^{2,4} and Thomas Juffmann^{2,3,*} 

¹ Biomedical Imaging Group, École Polytechnique Fédérale de Lausanne, Lausanne 1015, Switzerland

² University of Vienna, Faculty of Physics, VCQ, A-1090 Vienna, Austria

³ University of Vienna, Max Perutz Laboratories, Department of Structural and Computational Biology, A-1030 Vienna, Austria

⁴ Advanced Microscopy Facility, Vienna Biocenter Core Facilities (VBCF), A-1030 Vienna, Austria

E-mail: thomas.juffmann@univie.ac.at

Received 15 April 2021, revised 17 June 2021

Accepted for publication 28 June 2021

Published 13 July 2021



CrossMark

Abstract

Interferometric imaging is an emerging technique for particle tracking and mass photometry. Mass or position are estimated from weak signals, coherently scattered from nanoparticles or single molecules, and interfered with a co-propagating reference. In this work, we perform a statistical analysis and derive lower bounds on the measurement precision of the parameters of interest from shot-noise limited images. This is done by computing the classical Cramér–Rao bound (CRB) for localization and mass estimation, using a precise vectorial model of interferometric imaging techniques. We then derive fundamental bounds valid for any imaging system, based on the quantum Cramér–Rao formalism. This approach enables a rigorous and quantitative comparison of common techniques such as interferometric scattering microscopy (iSCAT), coherent brightfield microscopy, and dark-field microscopy. In particular, we demonstrate that the light collection geometry in iSCAT greatly increases the axial position sensitivity, and that the Quantum CRB for mass estimation yields a minimum relative estimation error of $\sigma_m/m = 1/(2\sqrt{N})$, where N is the number of collected scattered photons.

Keywords: microscopy, iScat, COBRI, Cramér–Rao, Fisher information, imaging, precision

(Some figures may appear in colour only in the online journal)

1. Introduction

Scattering-based interferometric imaging is a powerful method for the label-free detection and tracking of single biomolecules in solution [1–8]. In these techniques, light

scattered by a molecule is interfered with a reference to obtain a detectable signal. Applications include the determination of the mass of biomolecules and their oligomeric states [1–4], as well as high speed tracking of nanoparticles in cellular environments [5–8].

Due to the small scattering cross-section of a single protein (e.g. $10^{-11} \mu\text{m}^2$ for bovine serum albumin [2]), shot-noise typically limits how precisely mass or position can be estimated. Sensitivity can be improved by increasing the number of collected photons, either via longer observation times or higher incident power. However, long observation times limited by temporal dynamics of the sample and setup instabilities, and

* Author to whom any correspondence should be addressed.



Original Content from this work may be used under the terms of the [Creative Commons Attribution 4.0 licence](https://creativecommons.org/licenses/by/4.0/). Any further distribution of this work must maintain attribution to the author(s) and the title of the work, journal citation and DOI.

incident power is limited by detector well-depth and adverse photo-induced heating. It is therefore crucial to extract as much information as possible from every scattered photon.

The Cramér–Rao bound (CRB) quantifies the maximal achievable precision regarding the estimation of parameters from noisy measurements [9, 10]. CRBs have been used to derive the achievable precision regarding localization [11–13] and lifetime [14] estimation in fluorescence microscopy, as well as phase and amplitude estimation in coherent microscopy techniques [15, 16]. Furthermore, quantum estimation theory [17, 18] provides fundamental bounds on precision, describing the amount of information which can be extracted from the quantum state of light itself. One can thus compare the classical CRB, achieved with a given measurement system, with the quantum CRB (QCRB), bounding the achievable precision for *any* measurement system.

Here, we apply this formalism to scattering-based microscopy techniques to quantify the estimation precision regarding particle mass and position. We specifically compare interferometric scattering microscopy (iSCAT) [19, 20], coherent brightfield microscopy (COBRI) [21, 22], and dark-field microscopy (DF) [23]. In section 2, we first adapt a vectorial model of image formation [24–26], already applied for iSCAT [27], to COBRI and DF. We then introduce a numerical model for the calculation of CRBs, and finally derive analytic expressions for the corresponding QCRBs.

We apply this theoretical framework to interferometric imaging in section 3. First, we discuss nanoparticle localization, and show that all three techniques yield similar CRBs for transverse x, y localization, while iSCAT can be more than $5 \times$ more precise for z localization. Second, we calculate mass estimation precision, and show that DF is slightly more photon-efficient than interferometric techniques. Third, we discuss how these bounds are affected by attenuation of the reference light [8, 28, 29].

2. Theory—background and results

In this section, we first introduce the vectorial imaging model to precisely calculate the scattered fields. We then describe the concept of classical Fisher information (FI) and CRBs for shot-noise limited measurements, followed by their quantum counterparts.

2.1. Image formation

In this study we focus on three coherent microscopy techniques, as illustrated in figure 1. In all considered geometries, incident light of wavelength λ induces dipole scattering. In iSCAT microscopy, the backwards-scattered light is interfered with the portion of the incident light that is reflected at the water-glass interface. In COBRI, the forward scattered light is interfered with the transmitted incident light. In order to increase contrast, the reference light is often selectively attenuated by a factor β using a mask in the Fourier plane [8]. In DF, the scattered light is detected without interfering it with a reference field. To compare these different imaging schemes,

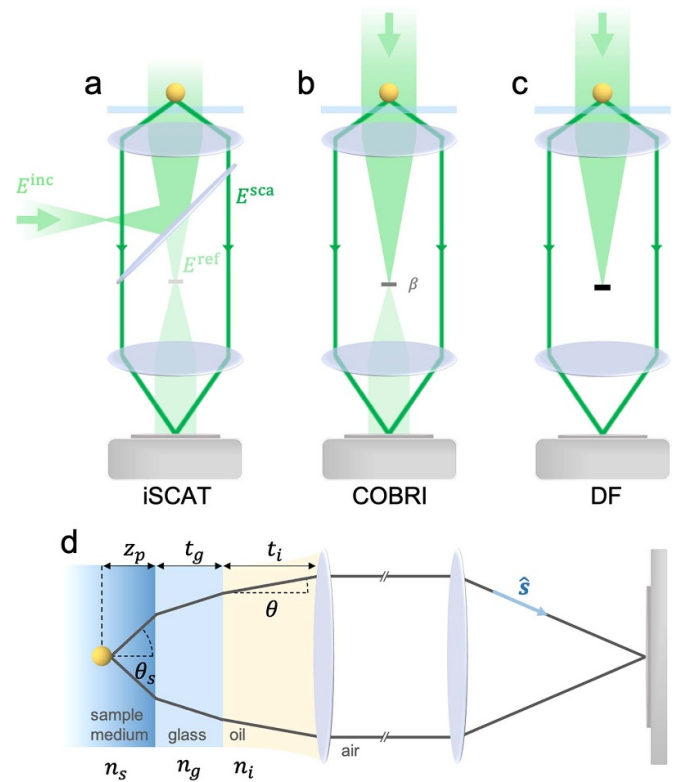


Figure 1. Sketches of the experimental configuration in (a) iSCAT, (b) COBRI and (c) DF microscopy. The light scattered by the particle on the coverslip is imaged onto a camera where it interferes with a reference. In iSCAT, the reference corresponds to the light reflected at the coverslip-sample interface. In COBRI the transmitted light is used as a reference, which can be selectively attenuated in the back-focal plane of the objective lens by a factor β . In DF the reference light is blocked completely, and only the scattered light is detected. In (d) the typical three-layer structure is depicted, showing the nanoparticle within a sample medium, a glass coverslip, and the immersion oil. Aberrations are introduced when the experiment deviates from the design conditions of the microscope objective.

a detailed model of image formation is required. Here, we apply a vectorial model [24–26, 30] that goes beyond the paraxial approximation in order to account for light collection with high numerical aperture (NA). The model has recently been applied to iSCAT [27], and demonstrated the importance of aberrations introduced by particle defocus. In the following, we lay out the most important steps of our model, which also applied to DF and COBRI. Details can be found in the appendix.

The detected intensity can be calculated as the interference of the scattered field E^{sca} with a reference field E^{ref} at the detector plane:

$$I^{det} = |E^{ref}|^2 + |E^{sca}|^2 + 2 |E^{ref}| |E^{sca}| \cos \phi^{sca}, \quad (1)$$

where ϕ^{sca} corresponds to the phase difference between the two fields. Note that in our notation we omit the spatial dependence and the incoherent sum on the two components of the electric field for brevity.

The calculation of the amplitude of the reference light is straightforward: assuming a linearly-polarized incident field

$\mathbf{E}^{\text{inc}} = E^{\text{inc}} \hat{\mathbf{e}}_x$, we get $\mathbf{E}^{\text{ref}} = r_{\parallel} \mathbf{E}^{\text{inc}}$ for iSCAT, and $\mathbf{E}^{\text{ref}} = \beta t_{\parallel} \mathbf{E}^{\text{inc}}$ for COBRI. Here, r_{\parallel} and t_{\parallel} are the Fresnel coefficients for the reflection and transmission of p -polarized light at the coverslip-water interface (r_{\perp} and t_{\perp} will be used for s -polarized light later), and β represents an optional attenuation factor. For DF, $\mathbf{E}^{\text{ref}} = 0$.

The calculation of the scattered field is more involved: we start with the scattering amplitude $\mathbf{E}^1 \equiv E^1 e^{i\psi_0} \hat{\mathbf{e}}_x$, which is proportional to the complex polarizability α of the particle and the incident field: $\mathbf{E}^1 \propto \alpha \mathbf{E}^{\text{inc}}$. Next, we need to include aberrations with a precise propagation model. We assume that a microscope objective provides aberration-free images under very precise design settings: the imaged plane must be located at the surface of a coverslip of thickness t_g^* and refractive index n_g^* , after an immersion oil layer of thickness t_i^* and refractive index n_i^* . Deviations from those settings will cause aberrations. As shown in figure 1(d), we now consider a particle at a distance z_p from the coverslip, and an immersion layer of thickness t_i , which is the typical experimental configuration as described in [31]. The indices of refraction of the sample medium, the immersion layer, and the cover glass are denoted by n_s , n_i , and n_g respectively. We assume for simplicity that $t_g = t_g^*$, $n_g = n_i = n_i^* = n_g^*$. θ_s and θ are the angles of the optical rays with respect to the optical axis in the sample medium and immersion medium, respectively. We also define the maximal angular aperture of the objective $\alpha_a = \sin^{-1}(\text{NA}/n_i)$, the azimuthal angle ϕ of a unit vector $\hat{\mathbf{s}}$, and the detector position \mathbf{r} , with the origin at the central focus position in the design setting.

With these settings, the scattered field in the detector plane is given by a Richards–Wolf integral [24, 26, 32]:

$$\mathbf{E}^{\text{sca}} = -\frac{i}{\lambda} E^1 e^{i\psi} \int_0^{\alpha_a} \int_0^{2\pi} \mathbf{A} e^{ik\Lambda} e^{ik\hat{\mathbf{s}} \cdot \mathbf{r}} \sin\theta \sqrt{\cos\theta} d\theta d\phi, \quad (2)$$

with \mathbf{A} a vector defined as:

$$\mathbf{A} = \begin{pmatrix} t_{\parallel} \cos\theta_s \cos^2\phi + t_{\perp} \sin^2\phi \\ (t_{\parallel} \cos\theta_s - t_{\perp}) \cos\phi \sin\phi \end{pmatrix}, \quad (3)$$

and the aberration term Λ depending on the geometry:

$$\Lambda = z_p n_s (\cos\theta_s + \xi) + n_i (t_i - t_i^*) (\cos\theta - 1), \quad (4)$$

where $\xi = +1$ for iSCAT, and $\xi = -1$ for COBRI. This difference is a result of an additional optical path length in iSCAT since the reference light and the scattered light do not originate from the same plane as compared to COBRI. A more compact formalism used to accelerate the numerical study is presented in the appendix.

2.2. Cramér–Rao bounds introduction

From measuring the spatial distribution of intensities $I^{\text{det}}(\mathbf{r})$ one can estimate unknown parameters γ , like the position x, y, z , or mass m of a particle. Any noise in the measurement will inevitably lead to stochastic estimations. The information about γ , which is contained in the detected, noisy intensities,

can be quantified using the concept of FI [9]. We build the FI matrix by computing the FI for each pair of parameters γ_i and γ_j , for the case where shot-noise is the dominant source of noise [15] by:

$$[\mathcal{J}(\gamma)]_{ij} = \int d\mathbf{r} \frac{1}{I^{\text{det}}(\mathbf{r})} \left(\frac{\partial I^{\text{det}}(\mathbf{r})}{\partial \gamma_i} \right) \left(\frac{\partial I^{\text{det}}(\mathbf{r})}{\partial \gamma_j} \right). \quad (5)$$

The variance of any unbiased estimator $\hat{\gamma}(I^{\text{det}})$ of the parameters γ must satisfy the Cramér–Rao inequality [9] given by:

$$\text{Var}(\hat{\gamma}_j) \geq [\mathcal{J}^{-1}(\gamma)]_{jj} \geq \frac{1}{[\mathcal{J}(\gamma)]_{jj}}. \quad (6)$$

The first inequality gives the CRB for estimation precision of γ_j , when all other parameters are unknown and the estimation is potentially affected by crosstalk. The second inequality yields the CRB assuming perfect knowledge of all other parameters. Finally, the corresponding lower bound on standard deviation is:

$$\sigma_{\text{CRB}, \gamma_j} = \frac{1}{\sqrt{[\mathcal{J}(\gamma)]_{jj}}}. \quad (7)$$

2.3. Quantum CRBs

The Quantum Fisher Information (QFI) and the associated Quantum Cramér–Rao Bounds (QCRB) provide fundamental estimation bounds which are valid for *any* measurement system [33]. The QFI quantifies the information contained in the quantum state of light itself. Recently this approach was applied to localization estimation precision in fluorescence microscopy [12], where the parameters of interest were given by the position of the particle $(\gamma_1, \gamma_2, \gamma_3) = (x_p, y_p, z_p)$, and the state of the fluorescence light was defined as a superposition of single photon states described by their coordinates in Fourier space. In iSCAT, the mass of the particle constitutes a further parameter of interest $\gamma_4 = m$, and the light scattered by a particle can be described as a superposition of coherent states parametrized by (θ, ϕ) with amplitudes $\epsilon(\theta, \phi)$ described in equation (2). Note that equation (1) assumes coherence between the reference and the scattered light, which constitutes a fundamental difference to the treatment of incoherent fluorescent light [18]. These notions allow calculating the QFI of the scattered fields collected by the objective, and the QCRBs yielding a bound on estimation precision irrespective of the measurement scheme that follows. Following the derivation in [34], we can write the QFI as:

$$\mathcal{K}_{jj} = 4 \int_0^{\alpha_a} d\theta \int_0^{2\pi} d\phi |\partial_j \epsilon(\theta, \phi)|^2. \quad (8)$$

The QFIs for localization, normalized for one collected scattered photon, are given by:

$$\mathcal{K}_{xx} = \frac{1}{\mathcal{A}} \int_0^{\alpha_a} d\theta \int_0^{2\pi} d\phi \left| kn_i \cos\phi \sin^2\theta \sqrt{\cos\theta} \mathbf{A} \right|^2 \quad (9)$$

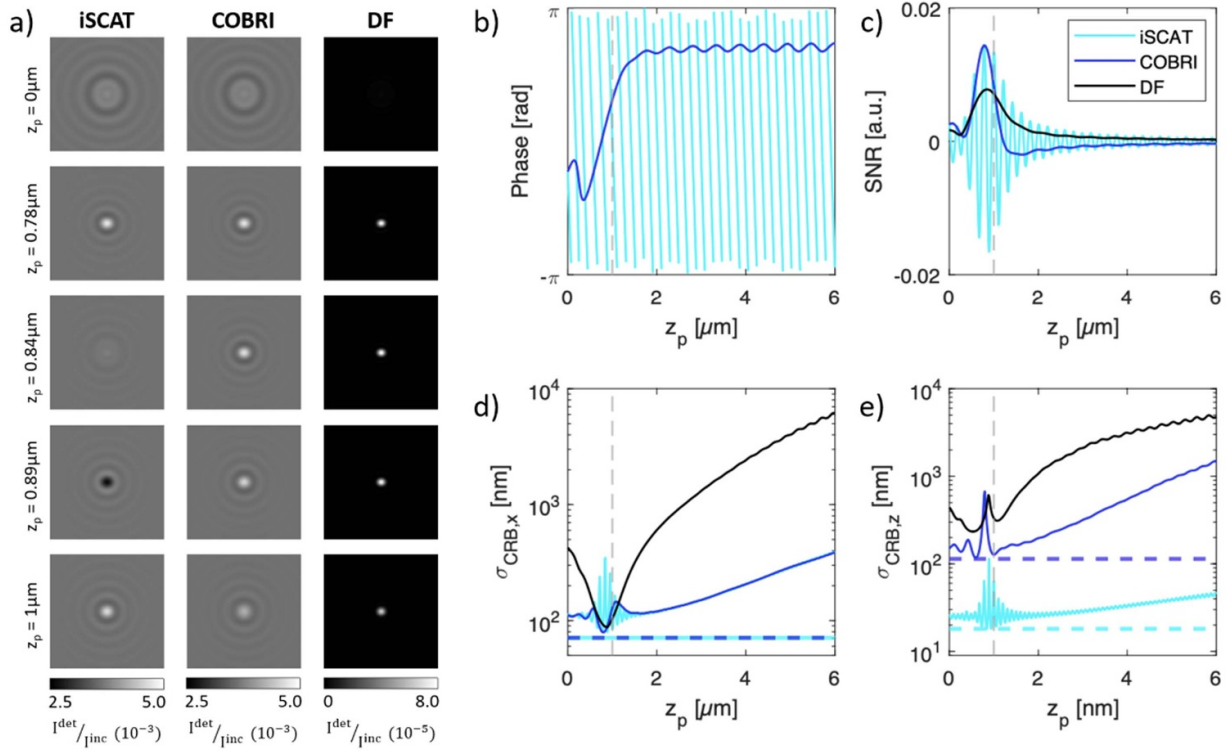


Figure 2. (a) Simulated detected intensity for iSCAT, COBRI, and DF at different axial particle positions z_p . The field of view is $4 \times 4 \mu\text{m}^2$. (b) On-axis phase shift $\phi^{\text{SCA}}(z_p)$ for iSCAT (cyan) and COBRI (blue). (c) On-axis signal to noise SNR(z_p) for iSCAT, COBRI, and DF (black). (d) Transverse and (e) axial CRBs for the different schemes as a function of z_p , normalized for one scattered photon detected. The dashed horizontal lines in panels (d) and (e) indicate the respective quantum CRBs. For all panels the focus plane z_f was set to $1 \mu\text{m}$ and is indicated by the horizontal dashed line.

$$\mathcal{K}_{yy} = \frac{1}{\mathcal{A}} \int_0^{\alpha_a} d\theta \int_0^{2\pi} d\phi \left| kn_i \sin\phi \sin^2\theta \sqrt{\cos\theta} \mathbf{A} \right|^2 \quad (10)$$

$$\mathcal{K}_{zz} = \frac{1}{\mathcal{A}} \int_0^{\alpha_a} d\theta \int_0^{2\pi} d\phi \left| kn_s (\cos\theta_s + \xi) \sin\theta \sqrt{\cos\theta} \mathbf{A} \right|^2, \quad (11)$$

where $\cos\theta_s = \sqrt{1 - n_s^2 \sin^2\theta/n_i^2}$. Note that equation (11) depends on ξ , i.e. on the optical path length difference of reference and scattered light. \mathcal{A} is a normalization factor given by:

$$\mathcal{A} = \int_0^{\alpha_a} d\theta \int_0^{2\pi} d\phi \left| \sin\theta \sqrt{\cos\theta} \mathbf{A} \right|^2. \quad (12)$$

The QFI for mass estimation is:

$$\mathcal{K}_{mm} = \frac{4}{m^2}. \quad (13)$$

The associated QCRBs are:

$$\text{Var}(\hat{\gamma}_j) \geq \sigma_{\text{QCRB}, \gamma_j}^2 = \frac{1}{\mathcal{K}_{jj}}, \quad (14)$$

written for the single parameter estimation, these fundamental bounds also bound the maximal achievable precision for multi-parameter estimation. In particular, this leads to the following bound on relative mass estimation:

$$\frac{\sigma_{\text{QCRB}, m}}{m} = \frac{1}{2}. \quad (15)$$

These bounds have been derived for one scattered photon collected by the optical system. To get the bounds for N photons the variances have to be scaled by $1/N$, and standard deviations by $1/\sqrt{N}$.

3. Numerical results

3.1. 3D localization precision

Interferometric imaging allows precise localization of single nanoparticles. Since the number of scattered photons is only limited by the intensity of the incoming field, precise tracking can be achieved on fast timescales and over an extended period [5]. This is a unique advantage compared to fluorescence microscopy, where finite lifetimes and bleaching limit tracking speed, precision and observation time.

Applying the equations introduced in the previous sections, we can study the performance of interferometric scattering techniques regarding localization precision. Figure 2 presents the results obtained for a 30 nm-diameter gold nanoparticle.

The microscope is focused to 1 μm above the cover glass. All other relevant parameters for the simulation can be found in the appendix. Figure 2(a) shows the simulated intensities (normalized to the incident intensity I^{inc}) for iSCAT, COBRI (for $\beta t_{\parallel} = r_{\parallel}$), and DF. Intensities are calculated for five different axial particle positions z_p and we observe that the signal modulations are larger for iSCAT and COBRI than for DF, due to the interference term in equation (1). A slight azimuthal asymmetry is observed due to polarization effects. Note that the z -positions of the particle were not chosen at equidistant steps in order to highlight the fast oscillations in the modulation of the iSCAT signal, as reported in [27].

These fast oscillations in iSCAT are due to fast changes in the phase between the reference and the scattered light (plotted in figure 2(b)), arising from changes in the relative optical path length that scale linearly with z_p . This is not observed for COBRI, where both fields originate from the same plane. For both techniques, there is an additional geometric phase shift, i.e. the Gouy phase shift. While a Gouy phase shift of π would be expected for a spherical wave passing through a focus [35], this can be drastically different for highly aberrated beams [36, 37], which needs to be considered in the analysis of 3D tracking data.

Figure 2(c) plots the on-axis (= center pixel) signal-to-noise ratio (SNR) for the three techniques as a function of z_p . Assuming shot-noise limited measurements, the SNR is proportional to:

$$\text{SNR} \propto \frac{|E^{\text{sca}}|^2 + 2 |E^{\text{ref}}| |E^{\text{sca}}| \cos \phi^{\text{sca}}}{\sqrt{|E^{\text{ref}}|^2 + |E^{\text{sca}}|^2 + 2 |E^{\text{ref}}| |E^{\text{sca}}| \cos \phi^{\text{sca}}}}, \quad (16)$$

where we set $|E^{\text{ref}}| = 0$ for DF. The proportionality constant depends on the collection efficiency and is the same for all methods discussed here. We see that the changes in phase lead to fast oscillations of the on-axis iSCAT SNR. For all three techniques, the maximum SNR values are not observed in focus, but closer to the cover glass. SNR values in iSCAT and COBRI are twice as high as in DF, which agrees with the analytic expression, where one obtains $\text{SNR} \propto |E^{\text{sca}}|$ for DF and $\text{SNR} \propto 2 |E^{\text{sca}}| \cos \phi$ for iSCAT and COBRI, as long as $|E^{\text{ref}}| \gg |E^{\text{sca}}|$.

From this analysis one might conclude that iSCAT and COBRI enable a localization precision twice as high as DF. This notion however does not take the full PSF of the microscope into account. We consider the task of estimating the transverse and axial positions of the particle from the full PSF information, and compute the associated CRBs of equation (6) using finite differences. The results are shown in figures 2(d) and (e), and are given per scattered photon that is collected. For a finite number N of scattered photons collected, the CRBs and QCRBs scale as $1/\sqrt{N}$. Note that we plot standard deviations, i.e. the square root of the CRB and QCRB of equations (6) and (14).

We observe that the minimal CRB for localization precision in the transverse x -direction is similar for all three techniques (in y -direction it would differ slightly, due to the

Table 1. Quantum Cramér–Rao bounds for 3D localization in iSCAT and COBRI, normalized for one scattered photon collected.

	iSCAT (nm)	COBRI (nm)
$\sigma_{\text{QCRB},x}$	71	71
$\sigma_{\text{QCRB},y}$	57	57
$\sigma_{\text{QCRB},z}$	18	114

asymmetry introduced by polarization). The CRB for interferometric measurements fluctuates, depending on the phase at the center of the PSF. These fluctuations are more rapid for iSCAT than COBRI. The axial dependence of the transverse localization precision shows pronounced differences, with iSCAT and COBRI offering higher precision than DF over a larger defocus range. This is a consequence of the more pronounced off-axis features of the respective PSFs, and is especially important for three dimensional tracking applications.

Figure 2(e) presents the axial localization precision of the three techniques. COBRI and iSCAT yield higher axial precision compared to DF thanks to the phase sensitivity of the interferometric imaging scheme. Since this phase varies much faster for iSCAT than for COBRI (figure 2(b)), the axial localization precision is greatly improved throughout the entire z_p range. Geometrically this has been explained in the discussion of figure 2(b), mathematically it is represented by the $\xi = \pm 1$ term in equation (4) affecting the z derivative as seen in equation (11). This significant difference in sensitivity is a particularly promising feature of iSCAT, since axial localization is a notoriously challenging problem for which double-objective collection [18] or PSF engineering [12] have been proposed.

The corresponding QCRBs are depicted as horizontal dashed lines in figures 2(d) and (e) and their values are given in table 1. They are derived from the quantum state of light itself, for the two different geometries of iSCAT and COBRI. We see that for x localization, the QCRBs in both cases are equal and that the optimal CRB for all three techniques saturate this fundamental bound. On the other hand, for z localization, the QCRB for iSCAT is significantly lower than for COBRI. Both interferometric techniques saturate this bound when the particle is close to the focus position. On the other hand, the axial sensitivity of DF does not reach the QCRB. Thus, the addition of a copropagating reference provides an effective method to saturate the QCRB, comparable to other interferometric strategies [18] or PSF engineering [38].

3.2. Mass estimation

Mass photometry is one of the most widespread applications of iSCAT [1–3]. It relies on the fact that the polarizability α is proportional to the mass of the nanoparticle. The task of estimating the mass of the particle becomes a task of estimating the amplitude of the scattered light.

The highest precision in mass estimation using interferometric techniques is typically achieved when the particle binds to the cover glass during the observation. Frames recorded

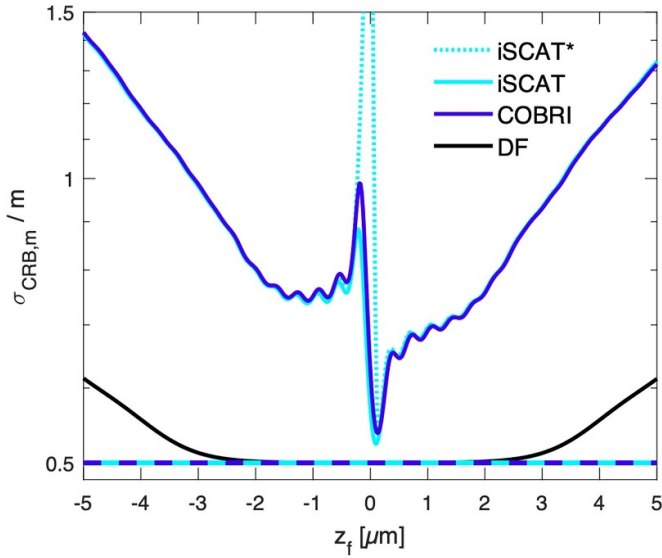


Figure 3. Cramér–Rao bounds for mass estimation, as a function of z_f for iSCAT (cyan), COBRI (blue), and Darkfield (black). The dotted line gives the CRB for the joint estimation of mass and z_p position in iSCAT. The CRBs are normalized by the mass to present relative precision. QCRBs correspond to the horizontal dashed lines, they do not depend on the imaging geometry. The particle is sitting on the coverslip at $z_p = 5$ nm.

before the binding event can then serve as an accurate estimation of the background. This enables extensive averaging and leads to measurements unaffected by nonspecific scattering background. Assuming perfect background subtraction, figure 3 shows the CRB for mass estimation as a function of the focus position of the microscope. While COBRI and iSCAT yield a similar precision, DF slightly surpasses these two techniques. All three techniques have the same QCRB, which only depends on the scattered amplitude. This means that DF is, in principle, the most efficient strategy for mass estimation among them. Experimentally, however, mass estimation using DF is difficult. This is due to the much smaller signal (see figure 2(a)), which makes DF more prone to other noise sources (e.g. camera read noise), as well as to systematic errors due to spurious reflections and scattered fields from elements along the optical system [20].

The dotted line in figure 3 shows the mass estimation precision obtained for iSCAT, when both m and z_p are unknown. In this case the off-diagonal terms of the FI matrix contribute significantly to the CRB, leading to lower estimation precision. In practice this means that slight alterations in z_p or m can lead to similar changes in the PSF, and are therefore difficult to discern. This degeneracy is lifted if the particle is moved out of focus, where the shape of the PSF allows for an efficient estimation of both parameters.

The CRB on mass estimation increases as we move away from the focus position. This is due to the finite field-of-view of our simulations ($4 \times 4 \mu\text{m}$), since energy is lost outside the field-of-view for large z_f values. While a larger field of view could be considered, this can become challenging experimentally, especially in the presence of other scatterers, additional noise sources, or an inhomogeneous reference wave.

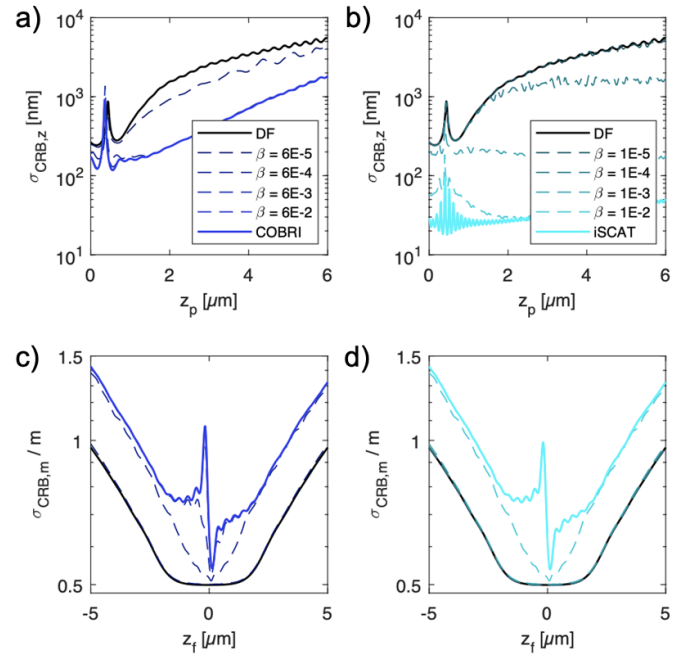


Figure 4. Cramér–Rao bounds for different attenuation values β . (a) and (b) depict the CRB for the estimation precision of the axial particle position z_p for COBRI and iSCAT at varying attenuation (dashed lines) as a function of z_p . The same parameters as in figure 2 were used. In (c) and (d) the change in CRB for mass estimation as a function of z_f are illustrated for COBRI and iSCAT for increasing attenuation. The same parameters as in figure 3 were used.

3.3. Attenuation of the reference beam

Several groups specifically attenuate the reference light in order to increase the contrast in iSCAT and COBRI [8, 28, 29], which decreases the requirements on detector well-depth and frame rate. To investigate the impact of attenuation on localization and mass estimation precision we plot the respective CRBs for different attenuation values in figure 4. We assume that the reference light can be attenuated without affecting the scattered light. Experimentally this can be realized using a mask in the back focal plane of the objective as depicted in figure 1.

We observe that an increasing attenuation leads to a monotonous transition between an interferometric setup into a DF setup, with all the consequences discussed in the previous sections. Both for iSCAT and COBRI, we see that the achieved CRBs do not change as long as $|E^{\text{ref}}| \gg |E^{\text{sca}}|$, and that we retrieve the DF characteristics for $|E^{\text{ref}}| \ll |E^{\text{sca}}|$. We deduce that attenuation in iSCAT should be avoided if axial localization is of concern. For transverse localization and mass estimation, other experimental constraints might outweigh the gains and losses in QFI offered by the introduction of attenuation.

4. Discussion and outlook

In this work we derived the estimation precision regarding particle mass and localization that can be achieved in scattering-based imaging schemes. Specifically, we compared iSCAT, COBRI, and DF and calculated the respective classical

and quantum Cramér–Rao Bounds ((Q)CRB) for shot-noise limited measurements.

Most notably, we find that iSCAT yields a significantly better axial localization precision than COBRI and DF. This is due to the information related to the relative phase accumulated between reference and scattered fields, which translates into oscillations in iSCAT signal as a function of particle position. For this reason, iSCAT also performs significantly better than single-objective fluorescence microscopy [18]. This information advantage also translates to the QCRB, in principle enabling an estimation error roughly five times smaller than those in COBRI and DF.

Regarding mass photometry, we find that all three techniques offer the same QCRB, since mass estimation is tightly related to estimating the amplitude of the scattered light and not its phase. While DF yields a lower CRB than iSCAT and COBRI, this advantage is hard to leverage experimentally, since the small signals in DF require low-noise detection, and excellent suppression of spurious signals. Note that our CRB-results for DF also apply to other DF geometries like coherent oblique angle light sheet microscopy [39]. We also show that there is a divergence in mass photometry precision in iSCAT, if the particle is close to the focus plane, and if neither the mass, nor z_p are known. Experimentally the divergence can be avoided by a slight defocus of the sample. From the QCRB, a fundamental bound $\sigma_m/m = 1/(2\sqrt{N})$ has been derived, with N the number of collected scattered photons.

Our framework provides the means to quantitatively compare the theoretical performance of different microscopy techniques, with the possibility to take into account imaging artefacts, aberrations, or even other sources of noise. This allows researchers to undoubtedly decide whether or not a given technique is up for the task at hand. Furthermore, our results give the means to revisit the design of an experimental setup for optimized sensitivity. For example, the fundamental bounds derived here for axial localization are more precise than the ones obtained for fluorescence microscopy, showing the benefit of exploiting a coherent scattering process.

We finally note that this work has focused on the information contained in the measurements. The ability to precisely measure particle mass or localization also hinges on efficient estimators, which remains a challenging question to tackle [5]. For this direction, one could benefit from the considerable amount of prior studies on localization for fluorescence microscopy [38, 40–42].

Another interesting direction for future studies is the consideration of more complex incident light fields. While our results are derived assuming a plane incoming wave, exciting possibilities arise when considering adaptive wave-front [15, 34, 43] and amplitude [13] shaping of the input light, non-classical states [44, 45], or cavity enhanced measurement geometries [46–49].

Data availability statement

All data that support the findings of this study are included within the article (and any supplementary files).

The MATLAB code for this project can be found at [50].

Funding

This project has received funding from the European Research Council (ERC) under the European Union’s Horizon 2020 research and innovation programme (Grant Agreement No. 758 752). C B acknowledges funding from the FFG (Project No. 870 337). J D acknowledges funding from European Research Council (ERC) under the European Union’s Horizon 2020 research and innovation programme (Grant Agreement No. 692 726 GlobalBioIm).

The authors would like to thank Dorian Bouchet, Reza Gholami Mahmoodabadi, and Michael Unser for helpful discussions.

Conflict of interest

The authors declare no conflicts of interest.

Appendix A. Vectorial PSF derivation

In this section, we explicitly derive the PSF model used for all image simulations in this manuscript. This derivation is equivalent to the one found in [27], but we will discuss the different steps in more detail to obtain the 3D vectorial PSF formalism.

A.1. Design setting of the microscope

We consider a three-layer model which describes the actual experiment [31], introducing three different regions with different refractive indices after the microscope objective (see figure 5): immersion oil, coverslip made of glass, and the sample medium. These three layers are described by their thickness and refractive index (t_i, n_i) , (t_g, n_g) , and (z_p, n_s) , respectively.

Microscope objectives are engineered to produce aberration-free images of a specific plane. This is called the design setting of the objective, characterized by parameters (t_i^*, n_i^*) and (t_g^*, n_g^*) . The imaged plane in this design setting is located right at the coverslip, which makes it independent of the sample parameters. Experiments are performed as close as possible to these design conditions. For example, we assume that the refractive index of the immersion oil and the parameters describing the cover glass match the design condition, i.e. $n_i = n_i^*$, and $(t_g, n_g) = (t_g^*, n_g^*)$. We also assume that $n_i = n_g$, such that reflections at the oil glass interface can be neglected. On the other hand, (z_p, n_s) depend on the sample and the scatterer position, and the immersion oil thickness t_i is a parameter set experimentally, related to the focus position of the microscope [31].

It is in this setting that [27] have derived a vectorial PSF model following a similar approach for fluorescence microscopy [26]. It is based on the vectorial model for a two-layer setting [24], which showed excellent agreement with a model based on the Huygens-Fresnel principle [30]. The geometric

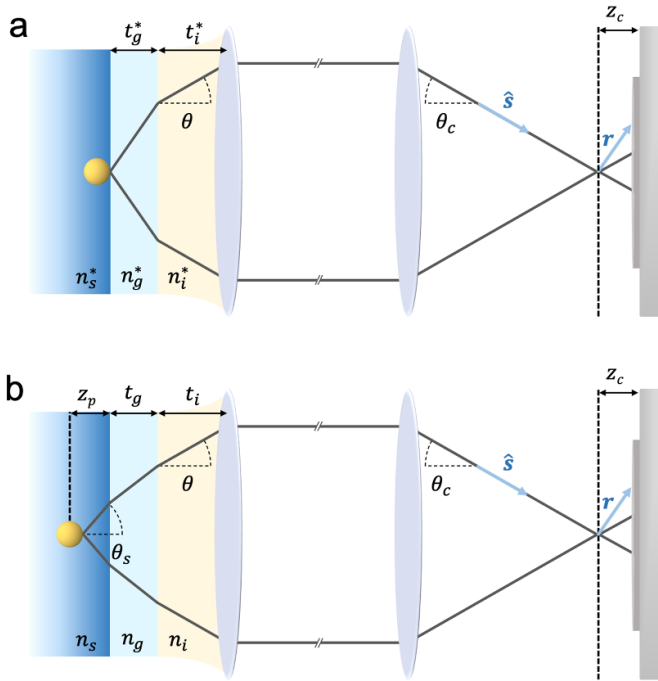


Figure 5. Illustration of the layer structure for (a) the design parameters and (b) the aberrated case.

aberrations of the three-layer setup can be described following [31], leading to a model that describes iSCAT experiments with high-fidelity [27].

We will start by describing the vectorial PSF model in the design setting, introducing the geometric aberrations of iSCAT and COBRI experiments in a second step.

A.2. The Richards–Wolf integral

To model the 3D electric field propagation in this imaging configuration, we will use the Richards–Wolf integral approach [32]. This vectorial model is well-suited for the high-NA configurations of localization techniques. From the electric strength vector at the back focal plane of the objective \vec{E}_a , the electric field in the object space can be calculated as:

$$\mathbf{E}^b(\mathbf{r}) = -\frac{ik}{2\pi} \int_0^{\alpha_a} \int_0^{2\pi} \tilde{\mathbf{E}}^a e^{ik\hat{s}\cdot\mathbf{r}} \sin\theta \sqrt{\cos\theta} d\theta d\phi, \quad (\text{A1})$$

where \mathbf{r} is defined relative to the focus position and the Fourier space is parametrized by the polar angle θ and the azimuthal angle ϕ .

The electric field is decomposed into a superposition of plane waves $e^{ik\hat{s}\cdot\mathbf{r}}$. The unit vector \hat{s} defining the direction of propagation has coordinates $(\sin\theta_c \cos\phi, \sin\theta_c \sin\phi, \cos\theta_c)$. The coordinates of the detector position are defined as $\mathbf{r} = (r \cos\phi_d, r \sin\phi_d, z_c)$. The equations above allow calculating the fields in different detector planes. In the following we will assume $z_c = 0$ for conciseness. The plane wave factor thus writes:

$$e^{ik\hat{s}\cdot\mathbf{r}} = e^{ikr \sin\theta_c \cos(\phi - \phi_d)} = e^{ikn_i r \sin\theta \cos(\phi - \phi_d)}, \quad (\text{A2})$$

where we have used Snell's law: $\sin\theta_c = n_i \sin\theta$.

A.3. 3D interferometric PSF in the design setting

We start this discussion by considering a typical experiment in the design setting, where the nanometric scatterer is placed on the surface of the coverslip. There are two contributions to the measured electric field to consider: the reference wave and the scattered field from the nanoparticle generated by the dipole emission induced by the incident light.

We assume the incident light \mathbf{E}^0 to be linearly polarized along the x direction. In iSCAT, it is partially back-reflected at the glass-sample interface, yielding the reference field:

$$\mathbf{E}^{\text{ref}*} = r_{\parallel} \mathbf{E}^0 \hat{\mathbf{e}}_x, \quad (\text{A3})$$

where r_{\parallel} is the Fresnel reflection coefficient of the glass-sample interface for p -polarized waves at normal incidence:

$$r_{\parallel} = \frac{n_g \cos\theta_s - n_s \cos\theta_g}{n_g \cos\theta_s + n_s \cos\theta_g}. \quad (\text{A4})$$

This factor may introduce a phase shift for the reflected light, but it does not in a typical iSCAT experiment, where n_g and n_s are real and $n_g > n_s$. For COBRI, the reference field is instead given by:

$$\mathbf{E}^{\text{ref}*} = \beta t_{\parallel} \mathbf{E}^0 \hat{\mathbf{e}}_x, \quad (\text{A5})$$

with t_{\parallel} the associated Fresnel transmission coefficient and β an optional attenuation factor.

The portion of light that is transmitted induces a dipole on the nanoparticle. The polarizability of a spherical particle of radius a , where $a \ll \lambda$, is given by:

$$\alpha = 4\pi a^3 \frac{\epsilon_1 - \epsilon_s}{\epsilon_1 + 2\epsilon_s}, \quad (\text{A6})$$

where ϵ_1 and ϵ_s are the permittivities of the nanoparticle and the sample medium respectively. The scattering phase and amplitude are given by:

$$\psi_0 = \arg(\alpha), \quad (\text{A7})$$

and:

$$\mathbf{E}^1 = \eta \frac{k^2}{\sqrt{6}\pi} |\alpha| \mathbf{E}^{\text{inc}}, \quad (\text{A8})$$

where $\eta = 1/\pi \arcsin(\min(\text{NA}/n_s, 1))$ is a factor taking into account the light collection efficiency [27]. The incident field on the particle is $\mathbf{E}^{\text{inc}} = t_{\parallel} \mathbf{E}_0$. Note that the near-fields of the radiating dipole are neglected here.

To propagate this dipole emission to the back focal plane, we consider the p (denoted by \parallel) and s (denoted by \perp) polarization components separately, determined by the following unit vectors:

$$\hat{\mathbf{e}}_{\parallel}^s = (\cos\theta_s \cos\phi, \cos\theta_s \sin\phi, -\sin\theta_s) \quad (\text{A9})$$

$$\hat{e}_\perp = (-\sin\phi, \cos\phi, 0). \quad (\text{A10})$$

The scattered field in the back focal plane then reads:

$$\tilde{\mathbf{E}}^{1*} = E^1 e^{i\psi_0} \left((\hat{e}_x \cdot \hat{e}_\parallel^s) t_\parallel \hat{e}_\parallel^s + (\hat{e}_x \cdot \hat{e}_\perp^s) t_\perp \hat{e}_\perp \right) \quad (\text{A11})$$

$$= E^1 e^{i\psi_0} \mathbf{A}, \quad (\text{A12})$$

with:

$$\mathbf{A} = \begin{pmatrix} t_\parallel \cos\theta_s \cos^2\phi + t_\perp \sin^2\phi \\ (t_\parallel \cos\theta_s - t_\perp) \cos\phi \sin\phi \end{pmatrix}. \quad (\text{A13})$$

One can then use the Richards–Wolf integral to go from the back focal plane to the camera plane:

$$\mathbf{E}^{\text{cam}*} = \mathbf{E}^{\text{ref}*} + \mathbf{E}^{\text{sca}*}, \quad (\text{A14})$$

with:

$$\mathbf{E}^{\text{sca}*} = -\frac{ik}{2\pi} E^1 e^{i\psi_0} \int_0^{\alpha_a} \int_0^{2\pi} \mathbf{A} e^{ik\hat{s}\cdot\mathbf{r}} \sin\theta \sqrt{\cos\theta} d\theta d\phi. \quad (\text{A15})$$

Note that since they were generated at the same plane, no phase retardation is introduced between the two waves. Also, for simplicity, the particle is placed on the optical axis. For a translated particle at position $\mathbf{r}_p = (x_p, y_p, 0)$, we have to replace \mathbf{r} by $\mathbf{r} - \mathbf{r}_p$ in equation (A1). This adds a factor $e^{-ikn_i(x_p \cos\phi + y_p \sin\phi) \sin\theta}$ in the integrand of the previous equation that will be omitted for the rest of this derivation.

A.4. 3D aberrated IPSPF

Once the microscope is defocused or the particle is not directly bound to the cover slip, this leads to changes in optical path lengths that are described by an aberration function Λ_s , which depends on the coordinates in Fourier plane [24, 25]. They can be expressed as [31]:

$$\Lambda_s(\theta) = \frac{z_p n_s}{\cos\theta_s} + \frac{t_i n_i}{\cos\theta} - \frac{t_i^* n_i}{\cos\theta} - n_i \sin\theta (z_p \tan\theta_s + t_i \tan\theta - t_i^* \tan\theta) \quad (\text{A16})$$

$$= z_p n_s \cos\theta_s + (t_i - t_i^*) n_i \cos\theta. \quad (\text{A17})$$

The immersion oil thickness t_i in the actual experiment is a parameter which is not easily measured experimentally. It can be estimated from the best geometric focus position z_f thanks to the following relation [31]:

$$t_i = z_p - z_f + n_i \left(\frac{t_i^*}{n_i} - \frac{z_p}{n_s} \right). \quad (\text{A18})$$

In the interferometric scheme of iSCAT, we also need to account for the additional phase due to the changed propagation distance of the incident wave:

$$\Lambda_s' = n_s z_p + n_i (t_i - t_i^*). \quad (\text{A19})$$

This term only corresponds to the way in, as for the backward pass it has already been accounted for in the aberration term. This term does not appear in COBRI, for which $\Lambda_s' = 0$ in the equations below.

For the reference wave, the optical path difference compared to the design setting in iSCAT is given by:

$$\Lambda_r' = 2 n_i (t_i - t_i^*). \quad (\text{A20})$$

For COBRI, this difference is:

$$\Lambda_r' = n_i (t_i - t_i^*) + n_s z_p. \quad (\text{A21})$$

We thus obtain the following equations:

$$\mathbf{E}^{\text{cam}} = \mathbf{E}^{\text{ref}} + \mathbf{E}^{\text{sca}}, \quad (\text{A22})$$

with:

$$\mathbf{E}^{\text{ref}} = \mathbf{E}^{\text{ref}*} \quad (\text{A23})$$

$$\mathbf{E}^{\text{sca}} = -\frac{ik}{2\pi} E^1 e^{i\psi_0} \times \int_0^{\alpha_a} \int_0^{2\pi} \mathbf{A} e^{ik\Lambda} e^{ik\hat{s}\cdot\mathbf{r}} \sin\theta \sqrt{\cos\theta} d\theta d\phi, \quad (\text{A24})$$

where we have concatenated all the aberration terms into $\Lambda = \Lambda_s + \Lambda_s' - \Lambda_r'$. Since the intensities only depend on the phase difference between scattered and reference waves, and since Λ_r' does not depend on θ , the optical path length Λ_r' term of the reference has been introduced in the Richards–Wolf integral. We obtain the expressions given in the main text, namely:

$$\Lambda = n_s z_p (\cos\theta_s + 1) + n_i (t_i - t_i^*) (\cos\theta - 1), \quad (\text{A25})$$

for iSCAT, and this term for COBRI is:

$$\Lambda = z_p n_s (\cos\theta_s - 1) + n_i (t_i - t_i^*) (\cos\theta - 1). \quad (\text{A26})$$

A.5. Compact formalism

An integration of equation (A24) over ϕ leads to the final expression:

$$\mathbf{E}^{\text{sca}} = -\frac{ikE^1 e^{i\psi_0}}{2} \begin{pmatrix} I_0 + I_2 \cos(2\phi_d) \\ I_2 \sin(2\phi_d) \end{pmatrix} \quad (\text{A27})$$

where:

$$I_0 = \int_0^{\alpha_a} B_0(\theta) \left(t_\perp + t_\parallel \frac{1}{n_s} \sqrt{n_s^2 - n_i^2 \sin^2\theta} \right) d\theta, \quad (\text{A28})$$

$$I_2 = \int_0^{\alpha_a} B_2(\theta) \left(t_\perp - t_\parallel \frac{1}{n_s} \sqrt{n_s^2 - n_i^2 \sin^2\theta} \right) d\theta, \quad (\text{A29})$$

with:

$$B_m(\theta) = \sqrt{\cos\theta} \sin\theta J_m(n_i k r \sin\theta) e^{ik\Lambda}, \quad (\text{A30})$$

using J_m the Bessel function of order m for $m=0, 2$. To compute this integration, Snell's law has been used, $\cos\theta_s = 1/n_s \times \sqrt{n_s^2 - n_i^2 \sin^2\theta}$, along with the following identities [32]:

$$\int_0^{2\pi} \cos(m\phi) e^{i\rho \cos(\phi - \phi_d)} d\phi = 2\pi i^m J_m(\rho) \cos(m\phi_d), \quad (\text{A31})$$

$$\int_0^{2\pi} \sin(m\phi) e^{i\rho \cos(\phi - \phi_d)} d\phi = 2\pi i^m J_m(\rho) \sin(m\phi_d). \quad (\text{A32})$$

This compact formalism only requires the computation of a single integral, compared to the two integrations in equation (A24). This accelerates the numerical computation of the PSF for all camera pixel positions \mathbf{r} .

A.6. Normalization of the photon number

The FI is proportional to the number of photons N , while the CRB scales as $1/N$ and the minimal standard deviation as $1/\sqrt{N}$. This photon number is proportional to:

$$N \propto \iint d\mathbf{r} |\mathbf{E}^{\text{sca}}|^2, \quad (\text{A33})$$

where we can neglect a constant prefactor.

The Cramér–Rao bounds presented in this work are normalized for one photon going through the imaging system. We thus normalize all electric fields with a global prefactor such that $N = 1$, similar to [18].

Appendix B. Fundamental bounds using quantum CRB

In this section we derive fundamental bounds on the localization precision of the nanoparticle that can be achieved in interferometric imaging schemes. This work is related to [18] where fundamental bounds have been derived for fluorescence microscopy and [34] where these quantities have been computed for coherent states.

B.1. Fundamental bound on localization

We consider a nanoparticle at position (x_p, y_p, z_p) . For brevity, the Richards–Wolf integral model described in equation (A24) can also be written as:

$$\mathbf{E}^{\text{sca}} = \int_0^{\alpha_a} \int_0^{2\pi} \boldsymbol{\epsilon}(\theta, \phi) e^{i\mathbf{k}\cdot\mathbf{r}} d\theta d\phi, \quad (\text{B1})$$

with the amplitude given by:

$$\boldsymbol{\epsilon}(\theta, \phi) = -\frac{ik}{2\pi} E^1 e^{i\psi_0} \sin\theta \sqrt{\cos\theta} \times e^{ik\Lambda} e^{-ikn_i(x_p \cos\phi + y_p \sin\phi) \sin\theta} \mathbf{A}. \quad (\text{B2})$$

The scattered field in the back focal plane of the objective is described as a superposition of coherent states in a basis of

plane waves parametrized by (θ, ϕ) , and with an amplitude $\boldsymbol{\epsilon}(\theta, \phi)$. We normalize this amplitude to one scattered photon passing through the imaging system:

$$\int_0^{\alpha_a} d\theta \int_0^{2\pi} d\phi |\boldsymbol{\epsilon}(\theta, \phi)|^2 = 1. \quad (\text{B3})$$

To emphasize the dependence on the particle position, we note that the amplitude of the coherent state is of the following form:

$$\boldsymbol{\epsilon}(\theta, \phi) = \mathbf{E}^s(\theta, \phi) e^{ikn_i((x_p \cos\phi + y_p \sin\phi) \sin\theta) + ikn_s z_p (\cos\theta_s + \xi)}, \quad (\text{B4})$$

with $\mathbf{E}^s(\theta, \phi)$ independent from (x_p, y_p, z_p) . In this expression, we have neglected the reference and the vectorial formalism, which would add an additional dimension. The ξ term in the z_p term is linked with the geometrical path length difference caused by the particle height z_p . It is equal to $+1$ for iSCAT and -1 for COBRI.

The QFI of a pure state made of orthogonal coherent states has a very concise formulation, as derived in equation (1) of [34]. Thus, we obtain the QFI for each parameter:

$$\mathcal{K}_{xx} = 4 \int_0^{\alpha_a} d\theta \int_0^{2\pi} d\phi |\partial_x \boldsymbol{\epsilon}(\theta, \phi)|^2 \quad (\text{B5})$$

$$= 4 \int_0^{\alpha_a} d\theta \int_0^{2\pi} d\phi |\boldsymbol{\epsilon}(\theta, \phi) kn_i \cos\phi \sin\theta|^2. \quad (\text{B6})$$

Similarly:

$$\mathcal{K}_{yy} = 4 \int_0^{\alpha_a} d\theta \int_0^{2\pi} d\phi |\boldsymbol{\epsilon}(\theta, \phi) kn_i \sin\phi \sin\theta|^2, \quad (\text{B7})$$

$$\mathcal{K}_{zz} = 4 \int_0^{\alpha_a} d\theta \int_0^{2\pi} d\phi |\boldsymbol{\epsilon}(\theta, \phi) kn_s (\cos\theta_s \pm 1)|^2, \quad (\text{B8})$$

where following from Snell's law, $\cos\theta_s = \sqrt{1 - n_s^2 \sin^2\theta/n_i^2}$. Injecting the expression of $\boldsymbol{\epsilon}$ yields the final formula of the QCRB described in equations (9)–(11).

Finally, the associated Quantum Cramér–Rao bounds are:

$$\sigma_{\text{QCRB},x}^2 = \frac{1}{\mathcal{K}_{xx}} \quad (\text{B9})$$

$$\sigma_{\text{QCRB},y}^2 = \frac{1}{\mathcal{K}_{yy}} \quad (\text{B10})$$

$$\sigma_{\text{QCRB},z}^2 = \frac{1}{\mathcal{K}_{zz}}. \quad (\text{B11})$$

The integrals on θ and ϕ are computed numerically and the resulting QCRBs are shown in figure 2.

B.2. Fundamental bound on mass photometry

The amplitude of the coherent states is proportional to polarizability, and therefore to mass m . We write $\epsilon(\theta, \phi) = m\delta(\theta, \phi)$, where the introduced quantity $\delta(\theta, \phi)$ does not depend on m .

The QFI is thus given by:

$$\mathcal{K}_{mm} = 4 \int_0^{\alpha_a} d\theta \int_0^{2\pi} d\phi |\partial_m \epsilon(\theta, \phi)|^2, \quad (\text{B12})$$

$$= 4 \int_0^{\alpha_a} d\theta \int_0^{2\pi} d\phi |\delta(\theta, \phi)|^2 \quad (\text{B13})$$

$$= \frac{4}{m^2}, \quad (\text{B14})$$

thanks to the normalization of ϵ .

The fundamental bound on mass estimation then writes:

$$\sigma_{\text{QCRB}, m}^2 = \frac{1}{\mathcal{K}_{mm}} = \frac{m^2}{4}. \quad (\text{B15})$$

Appendix C. Parameters used for simulations

For all simulations the following parameters were used: we considered a wavelength of 517.5 nm and used a NA of 1.3. The refractive indexes were: $n_s = 1.33$, $n_g = 1.5$ and $n_i = 1.5$. We took the ideal scenario where $n_i = n_i^*$ and $t_g = t_g^*$. The permittivity of the gold nanoparticle was set to $-3.7328 + 2.7725i$ [51]. The thicknesses used were, $t_i^* = 100 \mu\text{m}$, $t_g^* = 170 \mu\text{m}$ and t_i was given by equation (A17). The particle position was centered at $x_p = y_p = 0$ for all simulations. Gold nanoparticles had a 30 nm diameter with a density of $19.3 \times 10^3 \text{ kg m}^{-3}$.

ORCID iDs

Jonathan Dong  <https://orcid.org/0000-0002-8315-5571>

Thomas Juffmann  <https://orcid.org/0000-0002-7098-5736>

References

- [1] Young G et al 2018 Quantitative mass imaging of single biological macromolecules *Science* **360** 423–7
- [2] Piliarik M and Sandoghdar V 2014 Direct optical sensing of single unlabelled proteins and super-resolution imaging of their binding sites *Nat. Commun.* **5** 4495
- [3] Li Y, Struwe W B and Kukura P 2020 Single molecule mass photometry of nucleic acids *Nucl. Acids Res.* **48** e97
- [4] Sonn-Segev A et al 2020 Quantifying the heterogeneity of macromolecular machines by mass photometry *Nat. Commun.* **11** 1772
- [5] Taylor R W, Mahmoodabadi R G, Rauschenberger V, Giessl A, Schambony A and Sandoghdar V 2019 Interferometric scattering microscopy reveals microsecond nanoscopic protein motion on a live cell membrane *Nat. Photon.* **13** 480–7
- [6] Kukura P, Ewers H, Müller C, Renn A, Helenius A and Sandoghdar V 2009 High-speed nanoscopic tracking of the position and orientation of a single virus *Nat. Methods* **6** 923–7
- [7] Huang Y F, Zhuo G Y, Chou C Y, Lin C H, Chang W and Hsieh C L 2017 Coherent brightfield microscopy provides the spatiotemporal resolution to study early stage viral infection in live cells *ACS Nano* **11** 2575–85
- [8] Cheng C Y, Liao Y H and Hsieh C L 2019 High-speed imaging and tracking of very small single nanoparticles by contrast enhanced microscopy *Nanoscale* **11** 568–77
- [9] Trees H L V, Bell K L and Tian Z 2013 *Detection Estimation and Modulation Theory, Part I* (New York: Wiley)
- [10] Barrett H H and Myers K J 2013 *Foundations of Image Science* (New York: Wiley)
- [11] Chao J, Ward E S and Ober R J 2016 Fisher information theory for parameter estimation in single molecule microscopy: tutorial *J. Opt. Soc. Am. A* **33** B36–B57
- [12] Shechtman Y, Sahl S J, Backer A S and Moerner W 2014 Optimal point spread function design for 3D imaging *Phys. Rev. Lett.* **113** 133902
- [13] Balzarotti F, Eilers Y, Gwosch K C, Gynnå A H, Westphal V, Stefani F D, Elf J and Hell S W 2017 Nanometer resolution imaging and tracking of fluorescent molecules with minimal photon fluxes *Science* **355** 606–12
- [14] Bouchet D, Krachmalnicoff V and Izeddin I 2019 Cramér–Rao analysis of lifetime estimations in time-resolved fluorescence microscopy *Opt. Express* **27** 21239–52
- [15] Bouchet D, Dong J, Maestre D and Juffmann T 2021 Fundamental bounds on the precision of classical phase microscopes *Phys. Rev. Appl.* **15** 024047
- [16] Koppell S and Kasevich M 2021 Information transfer as a framework for optimized phase imaging *Optica* **8** 493–501
- [17] Tsang M, Nair R and Lu X M 2016 Quantum theory of superresolution for two incoherent optical point sources *Phys. Rev. X* **6** 031033
- [18] Backlund M P, Shechtman Y and Walsworth R L 2018 Fundamental precision bounds for three-dimensional optical localization microscopy with Poisson statistics *Phys. Rev. Lett.* **121** 023904
- [19] Young G and Kukura P 2019 Interferometric scattering microscopy *Annu. Rev. Phys. Chem.* **70** 301–22
- [20] Taylor R W and Sandoghdar V 2019 Interferometric scattering microscopy: seeing single nanoparticles and molecules via Rayleigh scattering *Nano Lett.* **19** 4827–35
- [21] Hsieh C L 2018 Label-free, ultrasensitive, ultrahigh-speed scattering-based interferometric imaging *Opt. Commun.* **422** 69–74
- [22] Hsieh C L 2019 *Label-Free, Ultrahigh-Speed, Direct Imaging and Tracking of Bionanoparticles in Live Cells by Using Coherent Brightfield Microscopy* (Berlin: Springer) pp 67–84
- [23] Weigel A, Sebesta A and Kukura P 2014 Dark field microspectroscopy with single molecule fluorescence sensitivity *ACS Photonics* **1** 848–56
- [24] Török P, Varga P, Laczik Z and Booker G R 1995 Electromagnetic diffraction of light focused through a planar interface between materials of mismatched refractive indices: an integral representation *J. Opt. Soc. Am. A* **12** 325–32
- [25] Haerberlé O 2003 Focusing of light through a stratified medium: a practical approach for computing microscope point spread functions. Part I: conventional microscopy *Opt. Commun.* **216** 55–63
- [26] Aguet F, Geissbühler S, Märki I, Lasser T and Unser M 2009 Super-resolution orientation estimation and localization of fluorescent dipoles using 3-D steerable filters *Opt. Express* **17** 6829–48
- [27] Mahmoodabadi R G, Taylor R W, Kaller M, Spindler S, Mazaheri M, Kasaian K and Sandoghdar V 2020 Point spread function in interferometric scattering microscopy (iSCAT). Part I: aberrations in defocusing and axial localization *Opt. Express* **28** 25969–88

- [28] Cole D, Young G, Weigel A, Sebesta A and Kukura P 2017 Label-free single-molecule imaging with numerical-aperture-shaped interferometric scattering microscopy *ACS Photonics* **4** 211–16
- [29] Liebel M, Hugall J T and van Hulst N F 2017 Ultrasensitive label-free nanosensing and high-speed tracking of single proteins *Nano Lett.* **17** 1277–81
- [30] Egner A and Hell S W 1999 Equivalence of the Huygens–Fresnel and Debye approach for the calculation of high aperture point-spread functions in the presence of refractive index mismatch *J. Microsc.* **193** 244–9
- [31] Gibson S F and Lanni F 1992 Experimental test of an analytical model of aberration in an oil-immersion objective lens used in three-dimensional light microscopy *J. Opt. Soc. Am. A* **9** 154–66
- [32] Richards B and Wolf E 1959 Electromagnetic diffraction in optical systems, II. Structure of the image field in an aplanatic system *Proc. R. Soc. A* **253** 358–79
- [33] Helstrom C W and Helstrom C W 1976 *Quantum Detection and Estimation Theory* vol 84 (New York: Academic)
- [34] Bouchet D, Rotter S and Mosk A P 2021 Maximum information states for coherent scattering measurements *Nat. Phys.* **17** 564–8
- [35] Feng S and Winful H G 2001 Physical origin of the Gouy phase shift *Opt. Lett.* **26** 485–7
- [36] Pang X and Visser T D 2013 Manifestation of the Gouy phase in strongly focused, radially polarized beams *Opt. Express* **21** 8331
- [37] Pang X, Fischer D G and Visser T D 2014 Wavefront spacing and Gouy phase in presence of primary spherical aberration *Opt. Lett.* **39** 88
- [38] Nehme E et al 2020 DeepSTORM3D: dense 3D localization microscopy and PSF design by deep learning *Nat. Methods* **17** 734–40
- [39] Bishop K W, Glaser A K and Liu J T C 2020 Performance tradeoffs for single- and dual-objective open-top light-sheet microscope designs: a simulation-based analysis *Biomed. Opt. Express* **11** 4627–50
- [40] Aguet F, Van De Ville D and Unser M 2005 A maximum-likelihood formalism for sub-resolution axial localization of fluorescent nanoparticles *Opt. Express* **13** 10503–22
- [41] Mortensen K I, Churchman L S, Spudich J A and Flyvbjerg H 2010 Optimized localization analysis for single-molecule tracking and super-resolution microscopy *Nat. Methods* **7** 377
- [42] Sage D et al 2019 Super-resolution fight club: assessment of 2D and 3D single-molecule localization microscopy software *Nat. Methods* **16** 387–95
- [43] Juffmann T, de los Ríos Sommer A and Gigan S 2020 Local optimization of wave-fronts for optimal sensitivity PHase imaging (LowPhi) *Opt. Commun.* **454** 124484
- [44] Liu L Z et al 2021 Distributed quantum phase estimation with entangled photons *Nat. Photon.* **15** 137–42
- [45] Pirandola S, Bardhan B R, Gehring T, Weedbrook C and Lloyd S 2018 Advances in photonic quantum sensing *Nat. Photon.* **12** 724–33
- [46] Juffmann T, Klopfer B B, Frankort T L I, Haslinger P and Kasevich M A 2016 Multi-pass microscopy *Nat. Commun.* **7** 12858
- [47] Nimmrichter S, Chen C F, Klopfer B B, Kasevich M A and Juffmann T 2019 Full-field cavity enhanced microscopy techniques *J. Phys. Photon.* **1** 015007
- [48] Mader M, Reichel J, Hänsch T W and Hunger D 2015 A scanning cavity microscope *Nat. Commun.* **6** 7249
- [49] del Hougne M, Gigan S and del Hougne P 2021 Deeply sub-wavelength localization with reverberation-coded-aperture (arXiv:2102.05642)
- [50] Dong J, Maestre D, Conrad-Billroth C and Juffmann T 2021 MATLAB code for Cramér–Rao analysis of interferometric microscopy techniques (available at: <https://github.com/JuffmannLab/iScatCRB>)
- [51] Johnson P B and Christy R W 1972 Optical constants of the noble metals *Phys. Rev. B* **6** 4370–9